



DS3100A

Liquid GC autosampler

Offering reliability, superior performance and straight forward automation for all GC applications.



Analysing fewer samples? Get precision and performance with a system that is perfectly sized for your needs. The **DS3100A** offers automation for processing up to 15 unattended samples.

KEY FEATURES:

- 50+ GC models supported
- 1 turret serves 2 injectors
- Extraordinary performance
- Requires low maintenance

It can be easily installed on all the GC and GC/MS systems available in the market, because of flexibility and modular configuration. It can be configured to serve up to two injectors in most supported GCs.

The self-aligning "plug and play" DS3100A mounts in seconds, without tools.

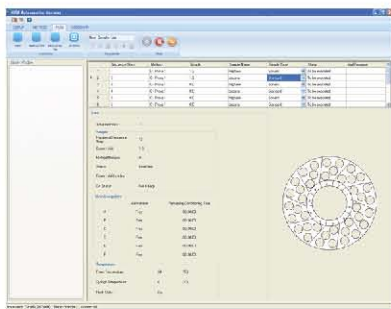
It can be easily moved between GCs of different brands, when workloads change.

Easy-to-use controls for zero operator training. A simple, easy to use keypad lets you start your analysis by just pushing the START button. All the samples in your rack will be automatically processed.

Quick sets of autosampler parameters can be done by the free PC control (DSS Autosampler Manager), provided together with the DS3100A, while all the routine operations such as analysis start, sample loading and extra wash can be managed by its dedicated keypad.

DS SCIENCE - Sampling for Science

www.dsscience.com



You don't need two turrets to automate the two injectors of your GC, as the **DS3100A** can use both the front and rear injectors. The injector selection is made directly by the sequence list, avoiding difficult set up operations or re-installation to pass from one injector to the other.

Furthermore, the **rotating head design** assures that the injection port is always free, for inlet easy maintenance. The system is fully self-contained and can be interfaced with almost any gas chromatograph, regardless of the GC brand or model you have in your laboratory.

The **DS3100A is the fastest liquid autosampler** available on the market: injection is performed in less than 100ms. Fast-injection technology ensures the best possible peak shape, while maximising the accuracy of your results.

The **DS3100A** features **the greatest solvent capacity and the widest solvent selection**: it supports the use of six solvent vials of 10ml each, giving a total capacity of 60ml.

Furthermore, advantage can be taken of the **double wash step capability**: as pre- and post-wash solvent in addition to A, B... F solvents you can also choose for a combination of A+B, A+C... F+E solvents for superior analytical performance (carry-over adverse!).

The **DS3100A** also handles the **most sophisticated sampling techniques**, including the internal standard technique (also known as sandwich injection), multi-phase, ambient headspace, priority injection, nano-litre injection and much more.

Parameters are easily programmable to optimise both the most convenient sampling methods for both extremely volatile or viscous samples and the best injection technique.

Variable needle depths allow samples to be taken from anywhere within the vial, thus performing an extractions directly from the vial.

DS3100A can help to process samples more quickly and to access better data. It can also mount **different types of syringes**, with volumes from 0.5 to 100µl.



DS3100A Technical specifications

General features

Syringe volume: 0.5, 1, 5, 10, 25, 50 and 100µl
 Tray capacity: 15 vials, 2ml
 Maintenance: preventive counters available
 Electrical control: LAN and TTL; optional: RS232
 Syringe area illumination: no

Filling

Sample volume: as low as step of 0.1µl
 Air volume: as low as step of 0.1µl
 Filling speed: 1-100µl/sec
 Viscosity delay: 0-15s
 Bubble elimination: up to 15 pull up strokes

Injection

Injection speed: 1-100µl/sec
 Injection depth: programmable
 Pre and post inj delay: 0-99s

Washing

Type: pre-injection, sample, post-injection
 Solvent capacity: 6x10ml vials
 Mode: single or double wash

Internal standard technique

IS volume: as low as step of 0.1µl
 Air gap volume: as low as step of 0.1µl
 Mode: 1 or 2 air gaps

Physical features

Dimensions (WxHxD): 280x570x320mm
 Weight: 6.4kg
 Power supply: 100-240±10%Vac; 50-60Hz; 60VA

Free software "HTA Autosampler Manager (Standard Version)" provided for PC control; upgrade to "HTA Autosampler Manager (CFR 21 Part 11 Version)" should be purchased separately. | Required PC for setup, service, method and sequence editing.

Distributed by:

DS SCIENCE

T: +82-031-798-6618

F: +82-031-798-6619

dss@dsscience.com

http://www.dsscience.com