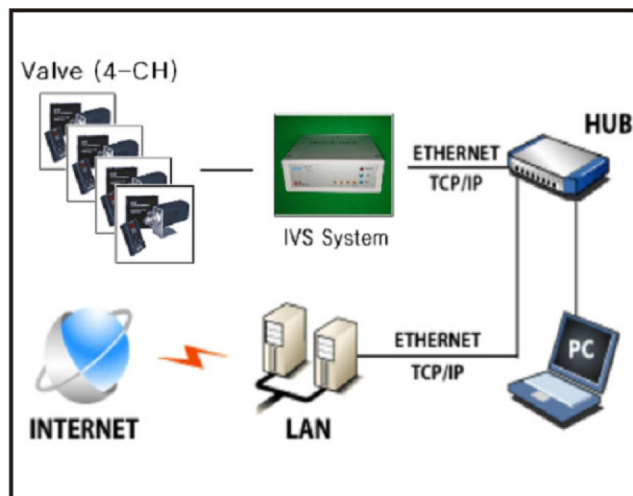


## Intelligent Valve Scheduler



VICI micro - electrical Valve device to connect to 10/100Base-T Ethernet

IVS Program provided Valve work schedule management features

Ethernet port using the Communication module upgrade offers

UART apply 4 Port (USB-B type)

4 Digital Input Port (Photo - Coupler interface)

4 Digital Output Port (Photo relay interface)

4 Digital Output Port (Relay contact - B type interface)

RS232C  $\Leftrightarrow$  TCP/IP Conversion Function

Provides easy-to-use Remote control utility tool

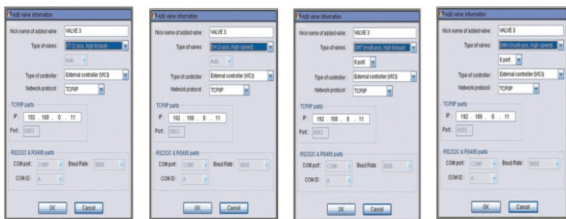
Security Features (IP filtering Password)

# IVS Intelligent Valve Scheduler

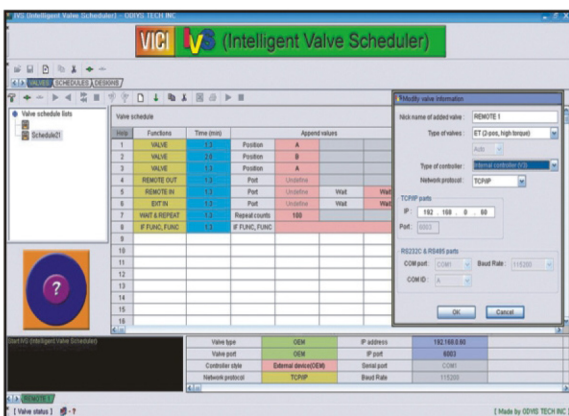
# Intelligent Valve Scheduler

## The support of a variety of valves

- ▶ Various type of valves in the IVS.
  - ET (2-pos, high torque)
  - EH (2-pos, high speed)
  - EMT (Multi-pos, high torque)
  - EMH (Multi-pos, high speed)



- ▶ Independent operating system
- ▶ Excellent schedule program (Valve, Remote OUT, Remote IN, Wait, Wait & Repeat)
- ▶ Supporting bi-direction control protocol.
- ▶ (Controller ↔ IVS) If some parts are changed in the control factor, it will be changed in opposite side simultaneously.

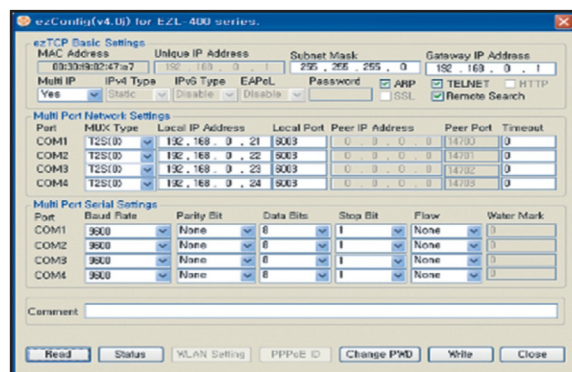


## Features a complete schedule

- ▶ You can operate multiple valve system which was added in the valve lists.
- ▶ You can use lots of function which needs when you are operating valves. (Valve, Remote IN, Wait, Wait & Repeat)
- ▶ All parameters can be added and removed automatically when the information of valves is changed.

## Easy scalability of the valves

- ▶ You can use it when you want to draw a total schematic using added valves.
- ▶ But, it can't support now. It will be coming up soon



## Specifications

<b>Processors</b>	
CPU	F8051Core
ROM	32K bytes Flash Memory
RAM	1280 bytes SDRAM
Operating System MS windows	
<b>Network Physical Interface</b>	
Ethernet	2 X RJ45 (10Base-T/1000Base-TX Ethernet) Ethernet Speed Auto Sense 1:1 or Cross Cable Auto Sense
Communication	TCP Server(T2S) TCP client (COD)
<b>Serial Port Property</b>	
Baudrate	1200bps~115200bps
Flow Control	RTS/CTS Hardware
Serial Interface	4 X RS232 port RXD, TXD, RTS, CTS ±15KV ESD Protection
Connector	USB-A Type(4Ch)
<b>Indicators(LEDs)</b>	
Power	Red
LINK1,2	Green
Status LED	5 x Status LEDs
Ethernet	TXD, RXD
<b>IN/OUT Connection</b>	
Remote	Input Port (4CH) - DSUB(9pin) Output Port-A(4CH) - DSUB(9pin) Output Port-B(4CH) - DSUB(15pin)
Power	DC Jack -Status LED
Display	Connector (5port)
<b>Remote Selection</b>	
Switch	8pin Dip Switch
Mode	TTL(Active high) Relay Contact - A(arbeit Contact) Relay Contact - C(change-over Contact)